

PERSONALITY TRAITS OF MATTHEW LOGELIN IN THE FATHERHOOD FILM

by Sabina Adia Achmad, Gita Rahmi

Submission date: 01-May-2023 01:14AM (UTC-0400)

Submission ID: 2080623668

File name: 36-47_Sabina_Adia_Achmad,_Gita_Rahmi.pdf (713.49K)

Word count: 4132

Character count: 21251

PERSONALITY TRAITS OF MATTHEW LOGELIN IN THE FATHERHOOD FILM

Sabina Adia Achmad¹, Gita Rahmi²

22

¹ English Department, Gunadarma University, Indonesia
² Faculty of Communication, Gunadarma University, Indonesia

19

Article History

Received : 10-03-2023

Revised : 20-03-2023

Accepted : 21-04-2023

Published : 30-04-2023

Corresponding author:
gitarahmi89@gmail.com

No. Contact:

Abstract: This study focused specifically on analyzing personality traits of Matthew Logelin in the Fatherhood film. Personality traits are aspects of a person's character that reveal how they think, act, and feel. The data's source is the film Fatherhood, and it is taken from the scenes and dialogues of the film. To examine the findings, the author used the qualitative approach and the personality characteristic theory of Paul Costa and Robert McCrae. According to the study's findings, Matthew Logelin's personality is characterized by high neuroticism, such as being moody, irritable, and worrying.

Keywords: film, personality traits, fatherhood, matthew logelin.

Cite This Article:

DOI:

<https://doi.org/10.56127/jushpen.v2i1.600>

INTRODUCTION

13

Literature is a creative work that depicts human life in a society which can be enjoyed, understood, and used by that society. Literature is often defined as a permanent expression in words of some thought or feeling about life and the world. The form of those literary works consists drama, film, songs, novel, short story, and also poem. Literary works can entertain, inspire, and broaden our perspectives about life.

Literary works have been created in a variety of forms. One of them is a film. Film is one of those literary works that can explain the plot of the story so vividly. Film is also defined as a literary work that presents a form of fictional narrative and is produced in various dimensions through visual and audio media. There are so many film genres. Many of the main genres had already been formed by the end of the silent period such as the horror film, the western, the melodrama, comedies, action-adventure, and so on. The film must provide the viewers a clear overview of the storyline, the conclusion, and the purpose of the story so they can enjoy it and gain the information that they require from it.

The term "personality" refers to a person's distinctive character, which is made up of a variety of traits, qualities, and attributes. The majority of the time, a person's main personality trait remains quite stable. A person's personality can also be described as enduring qualities and actions that make up their unique approach to life. To understand about the main character in the film, the author used the personality trait theory by Paul Costa and Robert McCrae, commonly known as "The Big Five Personality" factor analysis.

The author was interested in analyzing the personalities and describing the main character Matthew Logelin in Fatherhood film and more details through this research. The author chose this film and this topic as the subject of this research because each character in the film has its own story, which means a lot to the reader, especially Matthew's character. And the whole story of this movie is interesting. Fatherhood is released on Netflix on June 18, 2021. Fatherhood is an American comedy-drama film directed by Paul Weitz from a screenplay by Weitz and Dana Stevens based on the 2011 memoir Two Kisses for Maddy: A

Memoir of Loss and Love by Matthew Logelin. The film starts with a father named Matthew Logelin who struggles to raise his daughter after the sudden death of his wife who died a day after their daughter's birth. Research about personality traits has been conducted before. Mentari (2019) conducted research about personality traits of main characters in Cinderella Movie. Amiruddin (2010) studied about the personality of Miss Pym in The Devil and Miss Pym Novel. The differences between previous research and current research were in the movie and novel used as the data source.

In this research, the writer focused on finding out Matthew Logelin's personality in the Fatherhood film. Theories that the writer used are mostly from the theory of personality traits by Paul Costa and Robert McCrae.

LITERATURE REVIEW

Definition of Literature

Literature has a broad range and can be employed as a human creative work with aesthetic value in daily life. As stated by Jones (1968:1), "literature is simply another way we can experience the words around us through our imagination."

Literature is the entirety of fiction written in a style that explores themes such as the nature of existence, human desires, imperfections, the sharing of expressions, understanding, and eventually the sharing of experiences. According to Ima (2013:3), literature is a medium through which a person can express his or her ideas or protest against various societal norms. Those works that deal with normal issues are written with a particular purpose in mind.

Definition of Film

Film is a series of images that, when combined and shown on a screen, produce the appearance of an image due to specific effects. Therefore, according to Homby at Oxford University (1987), "a movie is a motion picture." It means that by watching a movie, we are watching a picture that can move or change from one picture to another.

On the other hand, film allows us to see aspects of the world through its story, its imaginative story, and its dramatic story. Like any other form of literature, it gives us pleasure. It can be enjoyment, amusement, education, or entertainment. As stated in Lorimer (1991:506), "films can record culture, and they can treat social or political issues and other aspects of societies to capture relationships that are difficult to be communicated by other means."

Film is also known as a motion picture, according to The American Heritage Dictionary of the English Language. Motion pictures are a series of filmed images viewed in sufficiently rapid succession to create the illusion of motion and continuity. Film is a broad term that includes individual motion pictures, the art of film, and the motion picture business.

Definition of Personality

Adapted from the Encyclopedia of Psychology, "Personality" refers to individual differences in characteristic patterns of thinking, feeling, and behaving. The study of personality focuses on two broad areas. One is understanding individual differences in particular personality characteristics, such as irritability or sociability. The other is understanding how the various parts of a person come together as a whole.

Costa & McCrae (1992) state that personality traits are defined as "dimensions of individual differences in tendencies to show consistent patterns of thoughts, feelings, and actions." The most influential personality research of the past few decades indicates that there are five basic personality traits. These are commonly known as "The Big Five." The theory was formulated by Robert (Jeff) McCrae and Paul Costa. It's an explanation of the role of the Big Five factors in personality.

Five Factor Theory includes a number of propositions about the origins, nature, and developmental course of personality traits and about the relation of traits to many of the other personality variables mentioned earlier. Five Factor Theory presents a biological account of personality traits in which learning and experience play little, if any, part in influencing the Big Five personality traits. Currently, the most widely accepted trait theory is derived from factor analysis in Costa and McCrae's (1992) "The Big Five" theory. This theory proposes five core traits that can be measured in all people:

- Extraversion: the degree to which energy is directed inward or outward.
- Openness: the degree to which one is thoughtful and national in considering new ideas
- Neuroticism: the degree to which one is emotionally stable or unstable.
- Agreeableness: the degree to which one gets along well with others

- Conscientiousness: the degree to which one is aware of and attentive to others around him or her and/or the details of a task.

Traits of Personality

1. Extraversion/Introversion

A person's energy can be determined by their levels of introversion and extraversion. The term "introversion" describes a person's energy being focused inward. Being quite, dependable, sober, or in control all fall under this category. With all of these characteristics, energy is focused within. A person who is extraverted is one whose energy is focused outside of themselves. Outwardly directed energy can manifest as being easygoing, energetic, optimistic, exuberant, for example.

2. Openness

A person's level of openness to experience is determined by how actively they seek out and value experiences for their own sake. On the one hand, those who are open-minded high O show some unconventionality in their ideals as well as curiosity and imagination. Emotions are often felt more strongly by them. Low-O individuals have less reactivity and a tendency to hold more traditional, conservative, and rigid beliefs.

3. Neuroticism

A stable emotional state and neuroticism go hand in hand. A high neuroticism personality would be easily distracted, moody, easily stressed, irritable, and frequently anxious. This personality type would have difficulty finding work that they were happy with. If forced to work, the majority of them will. Conversely, those with low neuroticism will be less tense, more composed, emotionally stable, and unburdened by unfavorable thoughts.

4. Agreeableness

The ability to be cooperative and empathetic toward others rather than distrustful and hostile is known as agreeableness. In widespread concern for societal harmony, the features represent individual variances. A friendly person prioritizes getting along with others. They typically compromise their interests with others and are considerate, amiable, kind, and helpful. Positive attitudes toward human nature are shared by agreeable people. They think that individuals are inherently trustworthy, decent, and honest. Disagreeable people put their own interests before getting along with others. In general, they are rude to other people. They are typically indifferent to other people's welfare and less willing to go above and beyond for others. They can occasionally become suspicious, hostile, and uncooperative because of their suspicions regarding the motivations of others.

5. Conscientiousness

Conscientiousness is the level of planning, restraint, and tenacity someone exhibits when pursuing their objectives. People with high conscientiousness are reliable, responsible, ambitious, and motivated. People with low conscientiousness are frequently sluggish, careless, and pleasure-seeking.

METHOD

Qualitative design was used in this research. The objective of the qualitative method is understand the concepts, opinions, and experiences through the collection and analysis of non-numerical data (such as music, photographs, films, and social media). Qualitative research is additionally used to understand how people see the world. Therefore, according to Creswell (2014), "qualitative research is an inquiry process of understanding based on distinct methodological traditions of inquiry that explore a social or human problem. The researcher constructs a comprehensive, holistic picture, analyzes language, presents material in detail, and conducts the study in a natural environment.

Based on the definition above, it can be concluded that qualitative research is about knowing how people experience and form opinions about other people. So, the author uses qualitative research to analyze Matthew's personality in the Fatherhood film.

This source of data in this research is Fatherhood film, an American comedy-drama film directed by Paul Weitz from a screenplay by Weitz and Dana Stevens based on the 2011 memoir *Two Kisses for Maddy: A Memoir of Loss and Love* by Matthew Logelin. The duration of this film is 109 minutes. The data used in this research are the dialogues and the pictures of the scenes, which were collected by watching, reading the dialogue, underlining the dialogue, and taking screen captures of all the scenes that relate to the personality traits.

The data were collected by watching the movie for several times, downloading the movie's subtitles as well, screen capturing the scene and the dialogue that are related to the personality traits theory by Costa and McCrae and underlining the subtitles. Then, the data were analyzed classifying the data found

according to Paul Costa and McCrae theory, analyzing the data using Paul Costa and McCrae theory and drawing conclusion.

RESULT AND DISCUSSION

After analyzing the data, the writer found three categories: neuroticism, conscientiousness, and extraversion.

1. Neuroticism

Neuroticism measures the continuum between emotional adjustment or stability and emotional maladjustment or neuroticism. People who have the tendency to experience fear, nervousness, sadness, tension, anger, and guilt are the high end of neuroticism. Individuals seeing at the low end of neuroticism are emotionally stable and even-tempered (Costa and McCrae, 1992).

Data 1

Moody



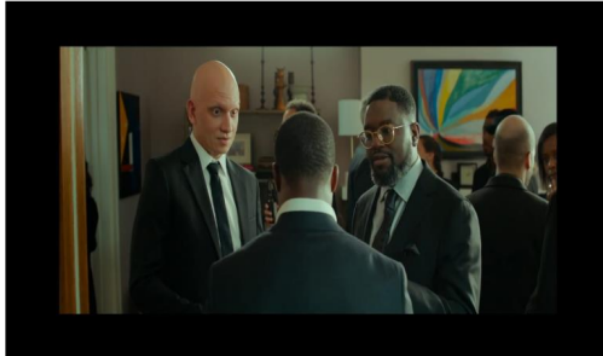
(01:53 – 02:20)

- Matthew : Hi, Mom.
Anna : Hi.
Matthew : **Don't dress me.**
Anna : You're gonna be okay. The both of you gonna get through this because the Lord has a plan for you.
Matthew : I know, Mom. But don't put on my shoe.
Anna : You're just gonna pick yourself up and be this wonderful, special guy you've always been.
Matthew : Yeah, I don't need you to tie my shoe. Don't tie it, Mom.

The data show that Matthew's personality tends to be a high level of neuroticism. And people with a high level of neuroticism would be easily

distracted, moody, easily stressed, irritable, and frequently anxious. From this scene, Matt locked himself in the room with a sad feeling and emotional. when his mother came to him, put on his shoes, tied the laces and said that everything would be fine. but Matthew insisted on asking his mother not to tie his shoelaces. The sentence above shows that Matthew's mood condition. It shows that he is lazy to socialize.

Data 2
Irritable

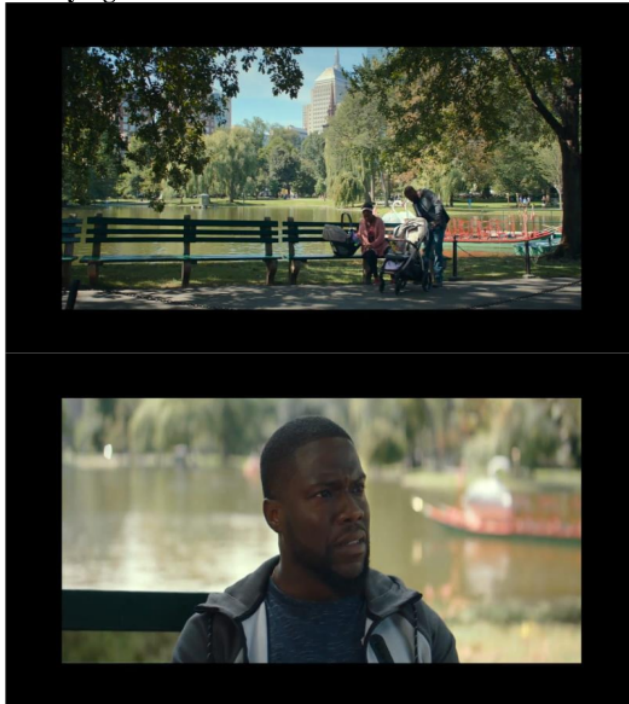


(06:42 – 06:58)

Jordan : Because you strong and confident. And you'll get through this too.
Matthew : This is so much worse than that. How is that the same?
Jordan : I'm just trying—
Matthew : **I promise you, I'mma punch you in the face. Don't say nothin' else to me.**

The data also show Matthew's tendency to the high level of neuroticism. Jordan and Oscar tried to calm and convince Matthew that he had the courage to deliver the speech and do it well. but Matthew told them that he couldn't do it now, and when jordan and oscar tried to convince him again, Matthew felt offended and angry with them. It can be seen in the sentence above, that Matthew was indeed irritable.

Data 3 Worrying



(26:49 – 27:10)

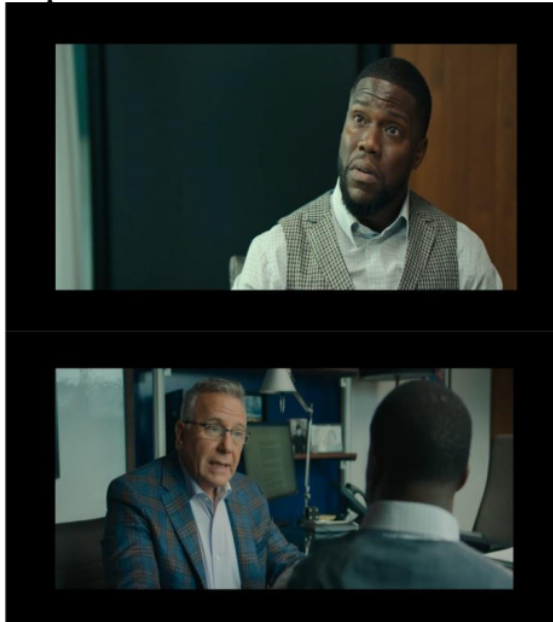
Matthew : See, it's not
Anna : Just reach under and flip the switch
Matthew : I did reach under, it's broken.
Anna : You've always been so impatient.
Matthew : **Stop. This ain't got nothing to do with patience! I'm telling you I'm trying to do it, and you just – I can't, I can't, Mom! Shit, I can't do none of it, I can't do it.**

When Matthew tried to open the stroller for Maddy. He was very confused and angry because he couldn't do anything for Maddy without Liz beside him. Because of it, he got louder and shouted I can't. In the sentence above, it shows that Matthew is worrying.

2. Conscientiousness

This is the degree to which one is aware of and attentive to others around him or her and/or the details of a task (Costa and McCrae, 1992). The term "conscientiousness" describes a person's capacity for self-control, self-organization, and persistence toward a certain objective they are pursuing. High levels of conscientiousness are often accompanied by a strong work ethic, ambition, and organization. Low conscientiousness is associated with a tendency toward laziness, carelessness, and disorganization.

Data 4
Responsible



(18:55 – 19:23)

Howard : Listen, I want you to take as much time. as you need
Matthew : Thank you
Howard : Five weeks, six weeks, I don – whatever.
Matthew : I'll probably about ten. Twenty years, That would do it, but I need my job. You know? That's why I can't, uh.. I can't have that time. **Listen, Howard, I was thinking maybe I could just work from home and.. and come in as you need me. You know? And when I come in, I'd have to bring my daughter with me.**

When Howard asked Matthew to take as much time as he needed. He really appreciated it and to do that it would probably take him ten or twenty years. So he thought that he would just work from home and would come to the office when he was needed, so he could take care of Maddy and be able to do his job too. In the sentence above, it shows that Matthew is responsible for Maddy and his job.

Data 5
Careless

In the second data for conscientiousness, it turns out that Matthew experienced the personality of conscientiousness in the low level. It can be seen from the dialogue below.



(41:08 – 41:19)

Marion : Good morning. Hi.
Matthew : Hey.
Marion : Where is my grandbaby? Is she dressed?
Matthew : What are you doing here, Marion?
Marion : Well, It's Maddy's pediatrician visit.
Matthew : **Oh, shit! Is it Thursday already? Shit!**

In this scene, Matthew looks confused by Marion's arrival at his house. Marion said that today was Maddy's scheduled visit to the pediatrician. Matthew panicked and immediately rushed to his room to get ready. In the sentence above, it shows that Matthew is careless.

3. Extraversion

The degree to which energy is directed inward or outward (Costa and McCrae, 1992). An extraverted individual is one whose energy is directed away from themselves. Energy that is focused outwardly can appear to be laid-back, vivacious, optimistic, or joyful.

Data 6



Optimistic



(16:10 – 16:52)

- Marion : You think you can do this, but you can't. Raising a child, that's a nonstop, all-day, all-night affair.
- Matthew : I understand, and I'll think about it.
- Matthew : I thought about it, yeah I just thought about it. You're right. No, Marion, you're right. I can't. I can't do it. **But you know what? I'm gonna do it, Yeah, I'm gonna bring Maddy up. Because I'm her father. And because I love her.**

In this scene, Marion suggests that Matthew should return to Minnesota to save money and find a new job there. Marion and her mother could help take care of Maddy, but Matt refused because his job and friends were where they were now. Marion also has reservations about Matt's ability to raise Maddy on his own. After hearing Marion's words, Matthew remained optimistic about continuing to care for and raise Maddy because he is a loving father who is confident in his ability to do that. In the sentence above, it shows the optimistic side of Matthew.

After collecting and analyzing the data, the researcher found several results taken from Kat Stratford's character in the *10 Things I Hate About You* movie using Sigmund Freud's theory.

Table 4.2 Total data of Kat's personality

No	Types	Amount of Data
1.	ID	16
2.	EGO	10
3.	SUPEREGO	3
Total Data		29

12

Based on the data in the table above, it can be concluded that the most dominant personality in Kat's character was Id with 16 data, as seen from how Kat expressing her feeling and prioritizing her desires.

ID

Datum number 1 (angry)



Kat is angry with Bianca

1

Kat: Where'd you get the pearls?

Bianca : They're mom's

Kat : **And you've been what? Hiding them for 3 years?**

Bianca : No. Daddy found them in a drawer last week.

Kat : **So you're just gonna start wearing them now?**

Analysis: Kat sees Bianca wearing a pearl necklace. She asks Bianca, "Where'd you get the pearls?" Then Bianca answered, "They're mom's" The pearl necklace belonged to their mother. Kat was angry. She thought Bianca had been hiding it for 3 years since their mother left. Kat said, "And you've been what? Hiding them for 3 years?" But Bianca calmly explained, "No. Daddy found them in a drawer last week." Kat was even more furious because Bianca was wearing the necklace which belonged to their mother, and Kat yelled, "So you're just gonna start wearing them now?". The Id is a personality that has been present in us since we were born. In this scene, Kat looks very angry. Anger can be categorized as an Id because anger is a type of emotion or a type of feeling that has been there since we were born. Anger is also a feeling a person has to make himself feel good.

EGO

Datum number 20 (drinking to comply her Id)



Kat asks for water at the bar

Kat : **Two waters.**

Analysis: In this scene, Kat is dancing with her friend at a music event. After a long time of dancing, Kat feels tired and thirsty, so she needs to drink. To fulfill this need, Kat had to go to the bartender to buy drinks for herself and her friends. According to Sigmund Freud's theory, the Ego is a conscious personality that satisfies needs realistically and fulfills Id needs. It can be said that to fulfill Kat's needs, she had to find a drink, so she went to the bartender to buy a drink. Kat's actions can be categorized as Ego personality because the Ego is a self-related desire in every human being that works consciously and must be done to fulfill everyone's desires.

SUPEREGO

Datum number 27 (giving advise)



Kat giving advice to Bianca

1

Bianca : Why don't you try being nice? People wouldn't know what to think.

Kat : You forget. I don't care what people think.

Bianca : Yes you do

Kat : No I don't. **You don't always have to be who they want you to be, you know.**

Analysis: In this scene, Kat and Bianca are talking together. Bianca advises Kat, to be nice to other people. But Kat rejected Bianca's statement. Kat didn't care at all what people thought of her. Kat said, "You forget. I don't care what people think." Kat also advises Bianca, to be ourselves; we should not follow what other people think of us to always be what they want. Kat said, "You don't always have to be who they want you to be, you know." According to Sigmund Freud's theory, the Superego is a personality form from the subconscious that does what is right and what is wrong, such as commands, advice, criticisms, or suggestions that contain norms and rules that apply in society.

CONCLUSION

After watching and analyzing Matthew's personality in the *Fatherhood* movie, the writer found 6 data kinds of personality traits. There are 3 neuroticism, 2 conscientiousness, 1 extraversion. The writer concludes that personality traits of Matthew are high level neuroticism, such as moody, irritable, worrying, also The author makes some suggestions for further researchers; those who are interested in pursuing the same subject are advised to talk about the dimensions of personality traits on a different character in a different movie. The author also suggested the next researcher to conduct more engaging study with various data and topics.

REFERENCES

- [1]. Amiruddin, M. (2010). *The Personality of Miss Pryn in Paulo Coelho's The Devil and Miss Pryn* (2000) A psychoanalytic Approach.
- [2]. Costa, P., & McCrae, R. (1992). *Revised NEO Personality Inventory (NEO-PI-R) and NEO Five-Factor Inventory (NEO-FII) professional manual*.
- [3]. Creswell, J. W. (2014). *Research Design : Qualitative, Quantitative and Mixed Methods Approaches* (4th ed ed.). Thousand Oaks, CA: Sage.
- [4]. Hornby. (2010). *Oxford Advanced Learner's Dictionary of Current English*. New York: Oxford University Press.
- [5]. Jones, E. H. (1968). *Outlines of Literature; short stories, novels, and poems*. Macmillan, New York.

- [6]. Kazdin, A. E. (2000). *Encyclopedia of Psychology*. American Psychological Association; Oxford University Press, Washington, D.C.
- [7]. Lorimer, Lawrence. T. 1991. *Glorier Encyclopedia of Knowledge: Vol. 7*. Danbury, Connecticut: Glorier Inc.
- [8]. Mentari, O. (2019). *Personality Traits: An Analysis of Main Characters in Cinderella (2015 in Disney)*. Jambi: Batanghari University.

PERSONALITY TRAITS OF MATTHEW LOGELIN IN THE FATHERHOOD FILM

ORIGINALITY REPORT

17%

SIMILARITY INDEX

15%

INTERNET SOURCES

4%

PUBLICATIONS

12%

STUDENT PAPERS

PRIMARY SOURCES

1	transcripts.fandom.com Internet Source	3%
2	lib.unnes.ac.id Internet Source	2%
3	parthasarathias.in Internet Source	1%
4	Submitted to Pasadena City College Student Paper	1%
5	eprints.ummetro.ac.id Internet Source	1%
6	moviespotify.com Internet Source	1%
7	vital.seals.ac.za:8080 Internet Source	1%
8	eprints.iain-surakarta.ac.id Internet Source	1%
9	Submitted to Universiti Teknologi MARA Student Paper	1%

10	bmcgeriatr.biomedcentral.com Internet Source	1 %
11	Submitted to Broward Community College Student Paper	<1 %
12	123dok.com Internet Source	<1 %
13	Submitted to Institut Pendidikan Guru Malaysia Student Paper	<1 %
14	Submitted to University of Nebraska, Lincoln Student Paper	<1 %
15	Submitted to CTI Education Group Student Paper	<1 %
16	Submitted to North Harris Montgomery Community College District Student Paper	<1 %
17	Submitted to Lewis University Student Paper	<1 %
18	id.123dok.com Internet Source	<1 %
19	www.ejournal.um-sorong.ac.id Internet Source	<1 %
20	repository.radenintan.ac.id Internet Source	<1 %

-
- 21 archive.org Internet Source <1 %
-
- 22 Dewi Agushinta R., Ihsan Jatnika, Henny Medyawati, Hustinawaty Hustinawaty. "Augmented Reality Design of Indonesia Fruit Recognition", International Journal of Electrical and Computer Engineering (IJECE), 2018 Publication <1 %
-
- 23 eprints.walisongo.ac.id Internet Source <1 %
-
- 24 repository.uhn.ac.id Internet Source <1 %
-
- 25 Holiday, Bonnie. "Therapist Experiences Working with Parents in Child-Welfare Cases.", Institute for Clinical Social Work (Chicago), 2020 Publication <1 %
-
- 26 Simon, Sonja Elena. "The Relationship between Conflict Management Styles and Personality Traits among Allied Health Leaders: A Quantitative Correlational Study.", Northcentral University, 2020 Publication <1 %
-

Exclude bibliography On